

D - Series

Large Metal Body

Position & Limit Switches



Position & Limit Switches

D Series - Metal Body



Product characteristics

- Protection class IP65 according to VDE 0470 T1
- Enclosure: Die-cast aluminium
- Cover: Sheet aluminium
- Actuator rotatable by 4 x 90° (depending on type)
- Cable entries 2 x M20 x 1.5
- Connection designation conforming to DIN EN 50013
- Sturdy contacts
- Hard wearing guide bushes

Good to know ...

Heavy duty enclosure for harsh operating conditions with a particularly tough design of the actuator and switching systems.

Position & Limit Switches

D Series - Metal Body

Technical design

- Slow- and snap action
- **Versions:** 1 NC/1 NO, 2 NC, 2 NO, 3 NC, 3 NO, overlapping contacts
- All NC contacts with \ominus in the circuit diagram are positively opening contacts
- Latching function available on request

Technical data

Electrical data		
Design insulation voltage	U_i max.	400 V AC
Conventional thermoelectric current (up to) ^①	I_{the}	10 A
Rated operating voltage	U_e max.	240 V
Utilisation category		AC-15, U_e/I_e 240 V/3 A
Short circuit protection (up to) ^①		Safety fuse 10 A gL/gG
Protection class		I
Mechanical data		
Enclosure material		Die-cast aluminium
Ambient temperature		-30 °C to + 80 °C
Mechanical lifetime		10 x 10 ⁶ switching cycles
B10d		20 million
Switching frequency		≤ 100/min.
Type of connection		Screwed connections
Conductor cross-sections		Single-wire 0.5 – 1.5 mm ² or strand with wire-end ferrule 0.5 – 1.5 mm ²
Cable entry		2 x M20 x 1.5
Protection class		IP65 conforming to IEC/EN 60529
Standards		
VDE 0660 T100, DIN EN 60947-1, IEC 60947-1		
VDE 0660 T200, DIN EN 60947-5-1, IEC 60947-5-1		

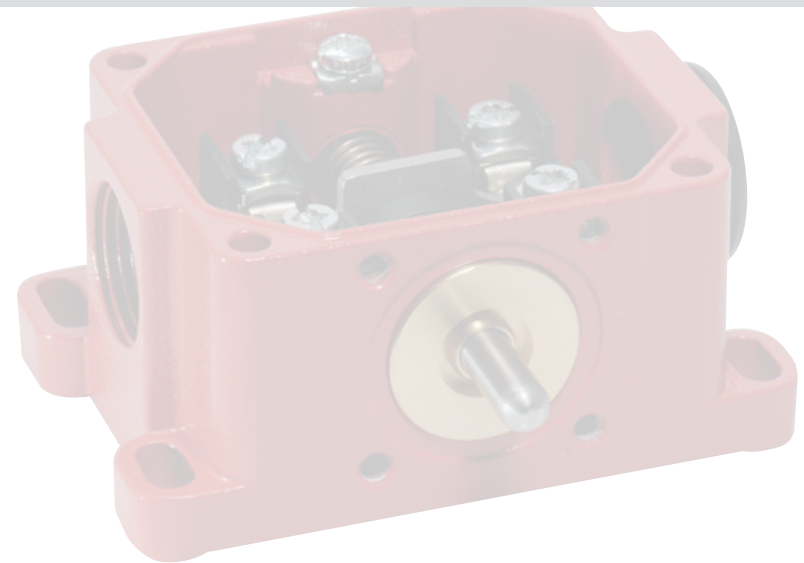
① Depending on switching system

Mounting

- 4 M5 oval holes

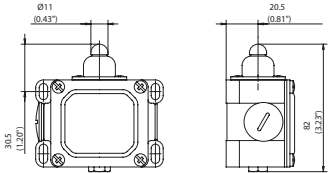
Options

- Customised cables and connectors are available on request





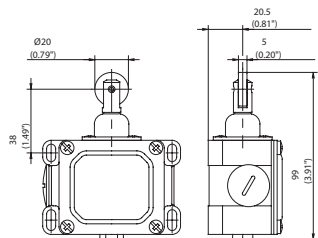
D-... W



	1 NC / 1 NO	2 NC	2 NO	1 NC / 1 NO overlapping
Slow-action system	6041103002 D-U1 W 8(0.32) mm(inch) 2(0.08) 0 35N 17	6041803090 D-A2 W 8 50N 12N	6041803046 D-E2 W 8(0.32) mm(inch) 2(0.08) 0 40N 20	6041303134 D-UV1Z W 8mm 6 2.5 2 1 0mm 40N 13.5N
Snap-action system	6041153156 D-SU1 W 8mm 2 1 0mm 40N 20N			

Special feature (on request): Also available with the following contacts: 3 NC, 3 NO, 2 NC / 2 NO (larger enclosure)

D-... RW



	1 NC / 1 NO	2 NC	2 NO	1 NC / 1 NO overlapping
Slow-action system	6041118229 D-U1Z RW 8mm 7.4 2 0mm 35N 17N	6041818741 D-A2Z RW 8 50N 12N	6041818052 D-E2 RW 8 2 0 35N 12N	6041318140 D-UV1Z RW 8mm 6 2.5 2 1 0mm 40N 13.5N
Snap-action system	6041168162 D-SU1 RW 8(0.32) mm(inch) 2(0.08) 1(0.04) 0 40N 20			

Special feature (on request): Available for high temperature range
With the following contacts: 3 NC, 3 NO, 2 NC / 2 NO (larger enclosure)

Position Switches

SN2 Series - Metal Body



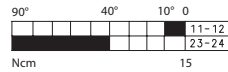
Replacement actuator: 3914350924

D-... AH

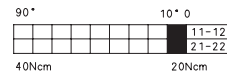
	1 NC / 1 NO	2 NC
--	-------------	------

Slow-action system

6041135019
D-U1 AH

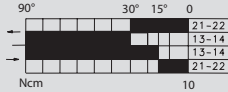


6041835107
D-A2 AH



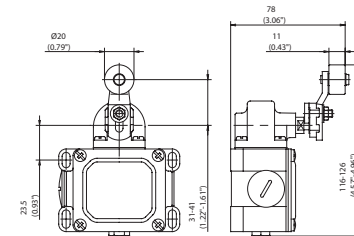
Snap-action system

6041185173
D-SU1 AH



Special feature (on request):

with steel roller, various roller diameters; cranked or straight lever; different lever lengths
Also available with the following contacts: 3 NC; 2 NC / 2 NO



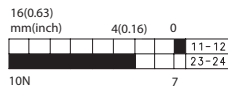
Replacement actuator: 3914211065

D-... HW

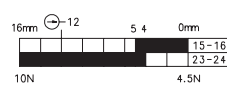
	1 NC / 1 NO	1 NC / 1 NO overlapping
--	-------------	-------------------------

Slow-action system

6041121010
D-U1 HW

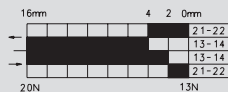


6041321142
D-UV1Z HW



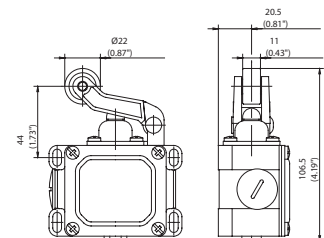
Snap-action system

6041171164
D-SU1 HW



Special feature (on request):

Available for high temperature range
Also available with the following contacts: 3 NC, 2 NC / 2 NO (larger enclosure)

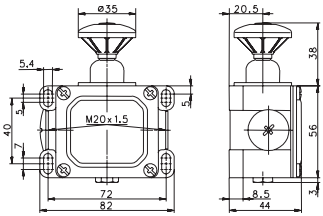


Position Switches

SN2 Series - Metal Body



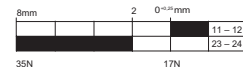
D-... PW



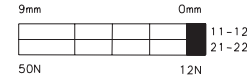
	1 NC / 1 NO	2 NC
--	-------------	------

Slow-action system

6041113006
D-U1 PW



6041813835
D-A2Z PW



Special feature (on request): Also available with the following contacts: 3 NC, 3 NO, 2 NC / 2 NO (larger enclosure)